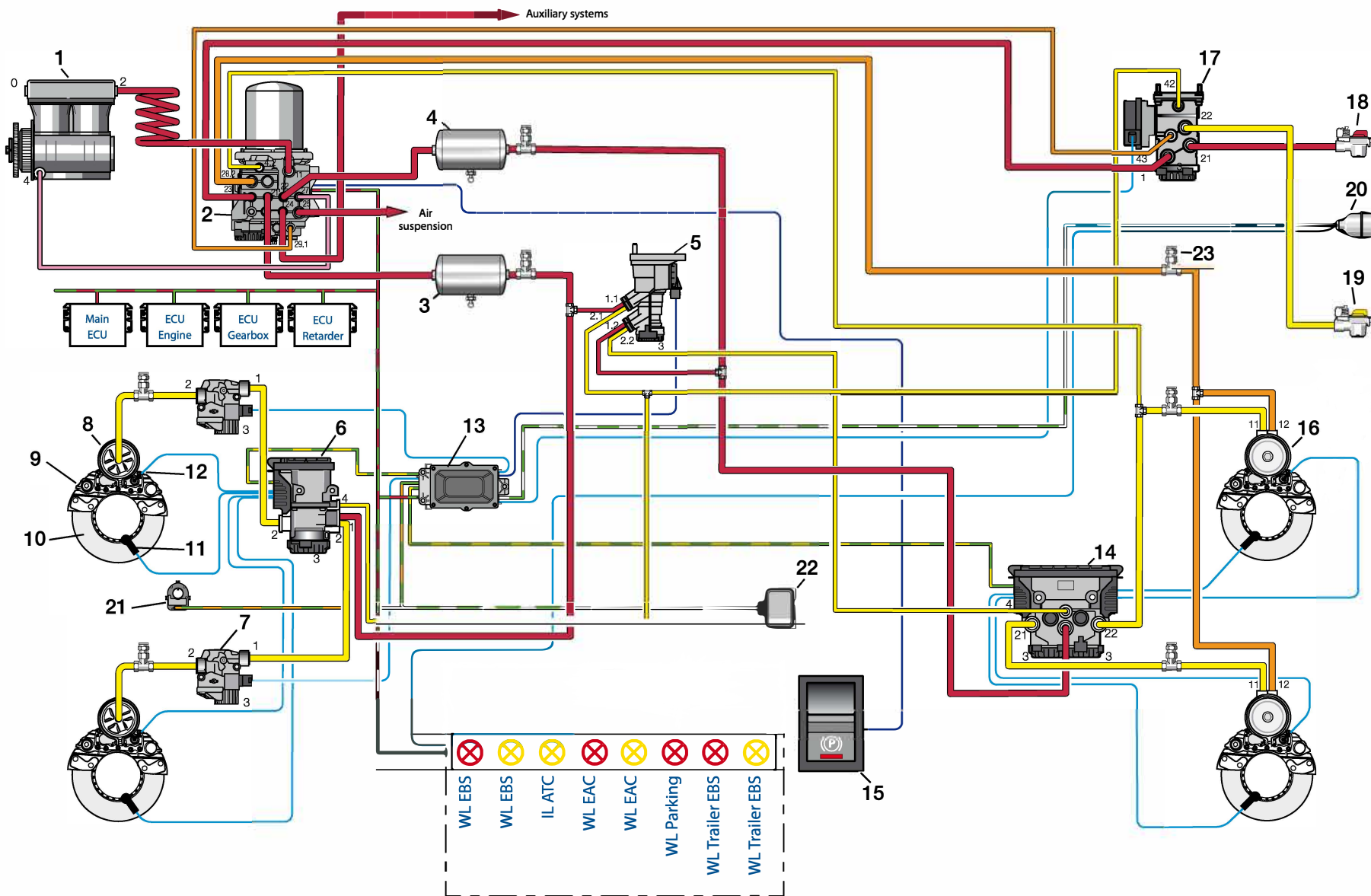




KNORR-BREMSE - EBS 7



1. Compressor with Clutch
2. Electronic Air Control (EAC) Unit
3. Air Reservoir Circuit 1
4. Air Reservoir Circuit 2
5. EBS Foot Brake Module
6. EBS One Channel Module
7. Pressure Control Modulator
8. Brake Chamber
9. Air Disc Brake
10. Brake Disc and Sensing Ring
11. Wheel Speed Sensor
12. Wear Sensor
13. EBS Electronic Control Unit (ECU)
14. EBS Two Channel Module
15. Hand Control Unit
16. Spring Brake
17. EBS Trailer Control Module
18. Coupling Head "Supply"
19. Coupling Head "Control"
20. EBS Connection ISO 7638
21. ESP Steering Angle Sensor
22. ESP Yaw Rate Sensor *
23. Test Connector



* May be integrated in the ECU (13)

- Supply
- ESS Signal
- Service Brake
- Parking Brake
- CAN-Signal "Control"
- CAN-Signal "Trailer"
- CAN-Signal "ESP"
- CAN-Signal "J1939"
- Analogue Electrical Signal
- Digital Electrical Signal
- WL Warning Lamp
- IL Information Lamp

EUROPART – Europas nr. 1 når det gælder reservedele til lastvogne, anhængere, varevogne og busser!

Kontakt din Tekniske Afd. på +45 82282228 www.europart-technik.dk