


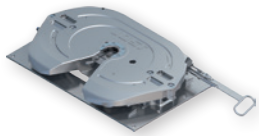



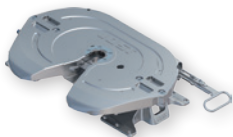
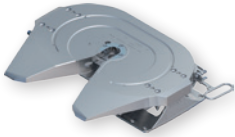
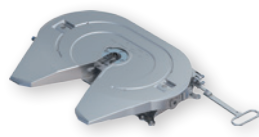
Range of application Fifth wheel couplings

JOST's range includes the perfect fifth wheel coupling with the required imposed load for a wide range of applications – from lightweight distribution traffic to normal road transport; from site traffic to heavy duty transport.



2" Fifth wheel couplings

Fifth wheel couplings (Series)	 JSK 26 D	 JSK 34 H	 JSK 36 D	 JSK 42 MK
King pin	2"	2"	2"	2"
Imposed load	6 t	16 t	20 t	15 t
D-value	50 kN	120 kN	152 kN	118 kN
Suitable for use with steering wedges	✓	✓	✓	✓
Bearing	Pivot bearing	Hybrid bearing	Pivot bearing	Slide bearing
Mounting height	120 mm	150/185 mm*	150, 172, 185, 205, 225 mm	140 mm
Maintenance	M	Z, W	M	Z, W
LubeTronic 1Point		✓		✓
LubeTronic 5Point		✓		
FlashTronic				✓
Sensoric		✓	✓	✓
SKS / KKS				
Approval	ECE-R55	ECE-R55	ECE-R55	ECE-R55

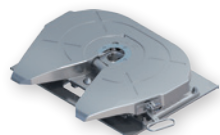
Fifth wheel couplings (Series)	 JSK 40 K	 JSK 42 K	 JSK 37 C	 JSK 37 E
King pin	2"	2"	2"	2"
Imposed load	20 t	20 t	20 t	20 t
D-value	152 kN	152 kN	152 kN	152 kN
Suitable for use with steering wedges	✓	✓	✓	✓
Bearing	Slide bearing	Slide bearing	Rubber bearing	Pivot bearing
Mounting height	150, 190, 225 mm	150, 185, 225 mm*	150, 185, 220, 250, 300 mm	150, 172, 185, 205, 225 mm
Maintenance	Z, W	Z, W	M, Z, W	M, Z, W
LubeTronic 1Point	✓	✓	✓	✓
LubeTronic 5Point	✓	✓	✓	
FlashTronic		✓		
Sensoric	✓	✓	✓	
SKS / KKS		✓		
Approval	ECE-R55	ECE-R55	ECE-R55	ECE-R55

* additional mounting heights available as chassis mounting



3½" Heavy duty – Fifth wheel couplings

Fifth wheel couplings (Series)



JSK 38 C



JSK 38 G



JSK 50 E



JSK 52 D

King pin	2" / 3½"	2" / 3½"	3½"	3½"
Imposed load	28/36 t	28/36 t	50 t	74 t
D-value	170/260 kN	170/260 kN	300 kN	400 kN
Suitable for use with steering wedges	✓	✓	✓	✓
Bearing	Rubber bearing	Cardan bearing	Pivot bearing	Pivot bearing
Mounting height	160, 190, 250 mm	290 mm	190 mm	196 mm
Maintenance	M, Z	M, Z	M, Z	M
LubeTronic 1Point				
LubeTronic 5Point	✓			
FlashTronic				
Sensoric				
Approval	ECE-R55	ECE-R55	ECE-R55	ADR



Dual-height fifth wheel systems

Fifth wheel couplings (Series)



JSK DH

King pin	2"
Imposed load	15 t
D-value	110 kN
Suitable for use with steering wedges	✓
Bearing	Pivot bearing
Mounting height	165–315 mm (DH150), 165–350 mm (DH200)
Maintenance	Z, W
LubeTronic 1Point	✓
LubeTronic 5Point	
FlashTronic	
Sensoric	
Approval	ECE-R55

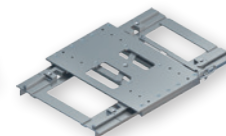


Sliders

Fifth wheel couplings (Series)



JSK SL/PO



EVHD

King pin	2"	2" / 3½"
Imposed load	20 t	20/36 t
D-value	152 kN	152/360 kN
Suitable for use with steering wedges	✓	✓
Bearing	Pivot bearing	
Mounting height	173/175, 203/205, 263/260 mm	
Maintenance	Z, W	
LubeTronic 1Point	✓	
LubeTronic 5Point		
FlashTronic		
Sensoric	✓	
Approval	ECE-R55	ECE-R55