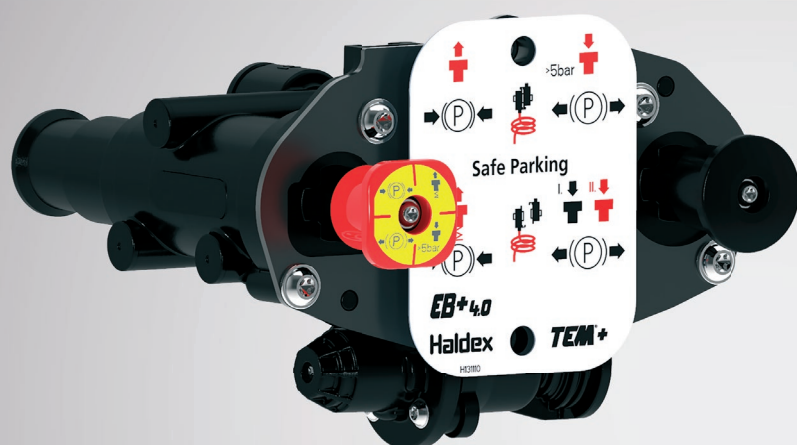


TECHNICAL INFORMATION



The new Trailer Emergency Module + family, in combination with the modular EB+ 4.0 family, stands for extra safety and flexibility.

Benefits

- › Park and release function through integrated controls (park and release valve)
- › Pressure protection valve (optional) for EGP, ILAS®-E+ and COLAS®+ air suspension or other auxiliary consumers
- › Safe Parking (optional), will reduce the risk of injury in the event of incorrect coupling operation
- › Full trailer valve (optional)
- › Can be fitted to all trailers with Haldex ABS 4.0 and EB+ 4.0
- › Spring brake activation in the event of pressure loss in the brake system

TEM⁺

Haldex Trailer Emergency Module+

Parking and maneuvering valve with emergency brake function and pressure protection valve for protection of auxiliary consumers (e.g. air suspension) for dual-line air brake systems in trailer vehicles.

Safe Parking is a feature, effecting the spring brakes coming into action during uncoupling or pressure loss.

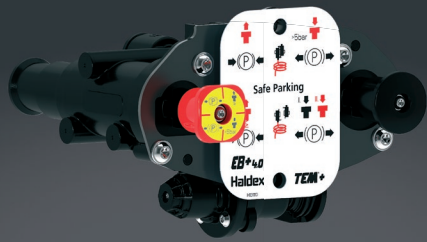
Before departure, the spring brake actuators must be released manually using the parking valve.

The TEM⁺ is compliant with the requirements of the ECE R 13 directive.



Innovative Vehicle Solutions

Design and Dimensions



TEM+

Technical data

Operating pressure	$p_e = 10 \text{ bar}$
Operating temperature	$-40^\circ\text{C} - +80^\circ\text{C}$
Weight	approx. 1.8 – 1.3 kg
Medium	Air
Pressure protection valve	C 6 - 22
Opening pressure:	$p_e = 6,2 \text{ bar}$
Closing pressure:	$p_e = 5,2 \text{ bar}$

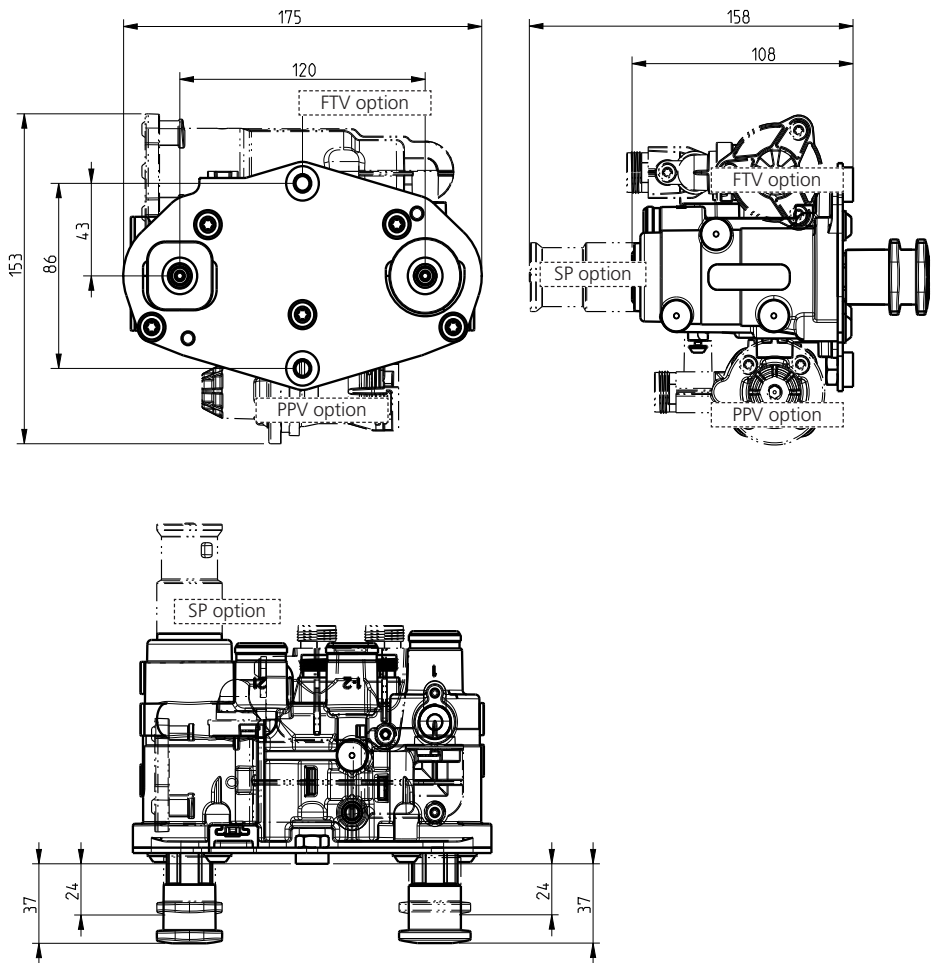
Port designations

- 1 = supply port (palm coupling supply)
- 1-2 = supply/delivery port (reservoir)
- 21 = delivery port (spring brake)
- 22 = delivery port (service brake front axle)
- 23 = delivery port (2 Ports)
- 3 = exhaust (spring brake)
- 4 = control port (palm coupling service)

Versions

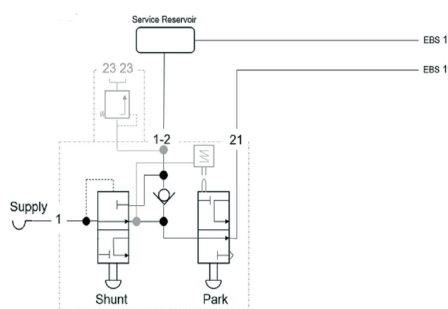
- 352 076 001: with shunt valve
- 352 077 001: with shunt valve and Safe Parking (SP)
- 352 078 001: with shunt valve and pressure protection valve (PPV)
- 352 079 001: with shunt valve, pressure protection valve (PPV) and Safe Parking (SP)
- 352 083 001: with shunt valve, pressure protection valve (PPV), Safe Parking (SP) and Full Trailer Valve (FTV)

Ending numbers ... 002: Valve with loose supplied aluminum label and warning sticker (Safe Parking).

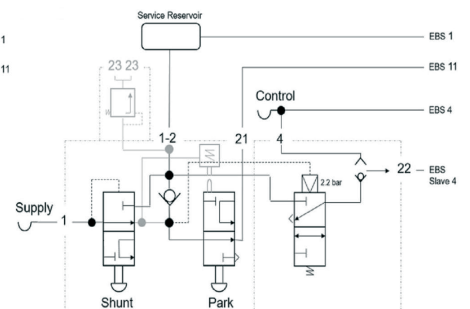


Dimensions 352 076 ... to 352 083 ...

Function diagram, DIN ISO 1219



TEM+ / TEM+ with Safe Parking



TEM+ with Full Trailer Valve